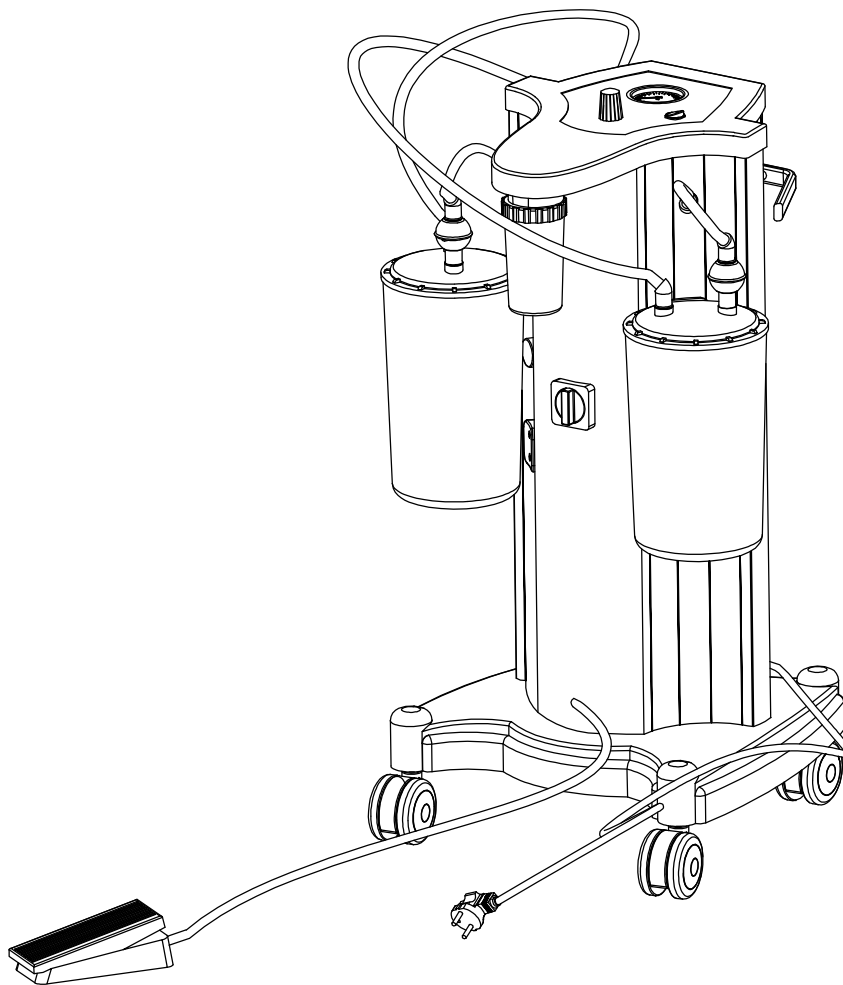


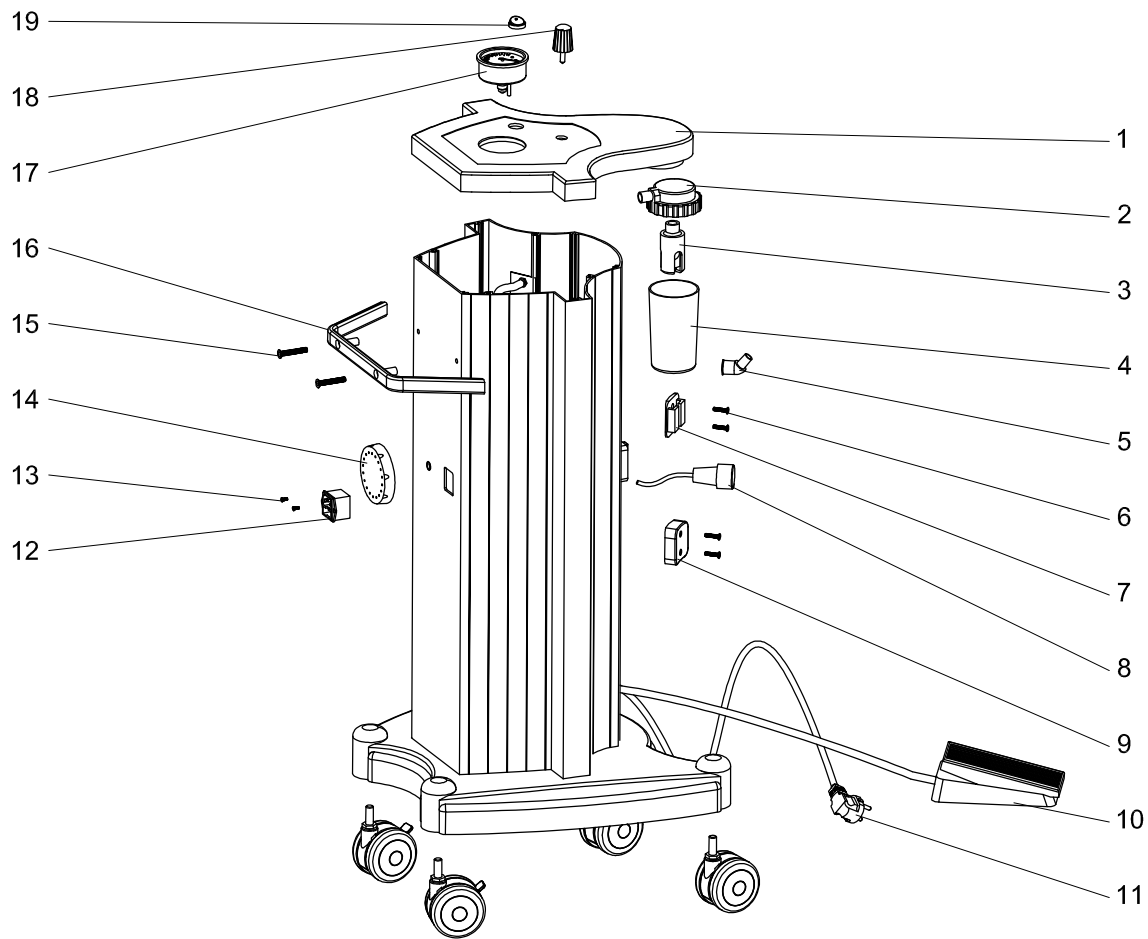
# SERVICE MANUAL

## Surgical Suction Units



## 2 Suction Devices Components Identification

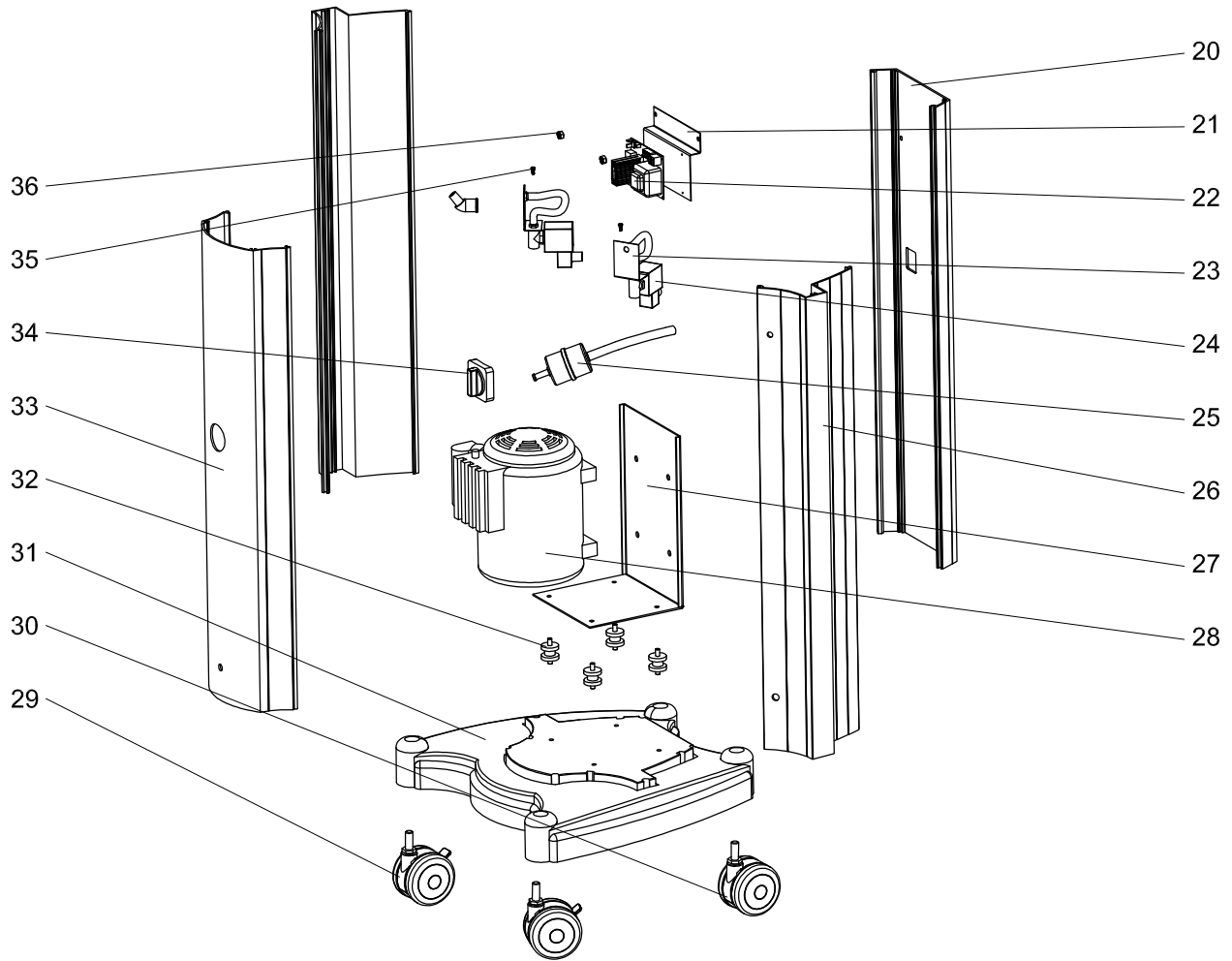
### Outer Components



Assembly Number	Component Number	Standard Number	Component Name	Explanation	Quantity
1	N 001		Novela Plastic Upper Cover		1
2	N 002		Safety Jar Glass Upper Plastic		1
3	N 003		Safety Jar Buoy		1
4	N 004		Safety Jar Glass		1
5	N 005		Hose Attachment Connector		2
6	N 006		Guide Screw 5x25		8
7	N 007		Jar Hanger Piece		2
8	NS 008		Novela Sensor	Novela Sesnseo	2
9	N 009		Jar Support		2
10	NE 010		Novela Extractor Pedal	Novela Extractor	1
11	N 011		Power Cable		1
12	N 012		Power Inlet (with fuse)		1
13	N 013		Guide Screw		2
14	N 014		Suction Exhaust		1
15	N 015	ISO 10642	Countersink Head Nut M6 x 50		2
16	N 016		Novela Back Handle		1
17	N 017		Vacuum meter		1
18	N 018		Air Adjustment Button		1
19	N 019		On-off switch		1

## 2.1 Suction Devices Components Identification

### Inner Components



Assembly Number	Component Number	Standard Number	Component Name	Explanation	Quantity
20	N 020		Novela Body back Aluminum Extrusion		1
21	N 021		Electronic Card Connection Sheet		1
22	N 022		Electronic Card		1
23	NS 023		Solenoid Valve Connection Sheet	Novela Sesnseo	2
24	NS 024		Solenoid Valve	Novela Sesnseo	2
25	N 025		Silencer ( for exhaust)		1
26	N 026		Novela Body Side Aluminum Extrusion		2
27	N 027		Vacuum Pump Connection Sheet		1
28	N 028		Vacuum Pump		1
29	N 029		Novela Wheel, without Brake		2
30	N 030		Novela Wheel, With Break		2
31	N 031		Novela Base Plastic		1
32	N 032		Vacuum Pump Connecting Batten Rubber		4
33	N 033		Novela Body Front Aluminum Extrusion		1
34	N 034		Jar Selection Arm		1
35	NS 035		Sensor Grounding Screw	Novela Sesnseo	2
36	N 036	ISO 4032	Hexagonal Nut M10		2

# 3 Possible Faults of Suction Units

Please check the machine if it is contacted with electricity supplier and put on gloves for insulation.

## 3.1 Fuse Replacement

Firstly, please disconnect power supplier. You can find fuse below power input.

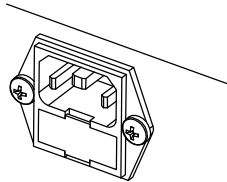


Figure 1

Fuse holder can be inserted by a flat screwdriver, as indicated in the figure 2. Front part of fuse holder should be opened by user, as indicate in the figure 3. Fuses go up after opening the holder (figure 4) then, 1.25 A fuses can be removed.

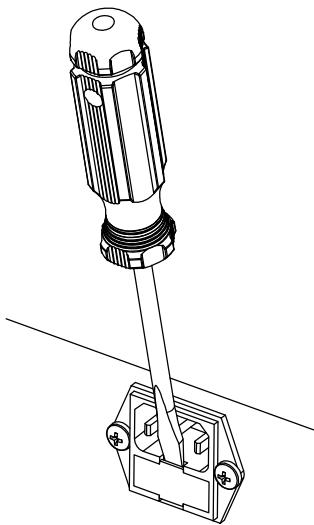


Figure 2

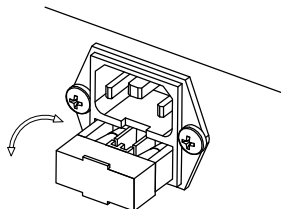


Figure 3

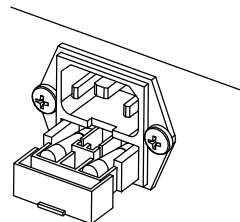


Figure 4

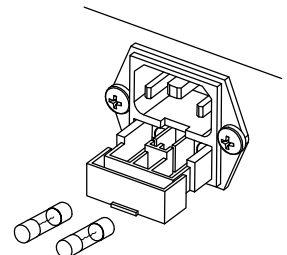


Figure 5

Removed fuses should be controlled by user. In case wire in fuse is cut or fuse is non-transparent, it should be replaced by new one (figure 6). New 1.25 A fuse can be inserted by the same process.



Figure 6

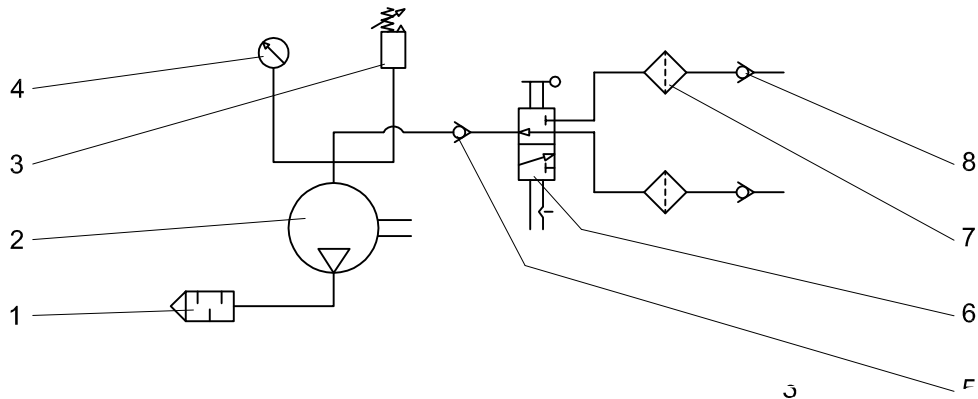
## 3.2 Possible Malfunctions and Solutions For Surgical Suction Units

MALFUNCTION	POSSIBLE REASON	SOLUTIONS
1. The device is not working	There is no electricity	The plug is broken. Electrician help is needed
		Cable of the device is faulty. A new cable is needed
		There must have been a blow-out. Please check
	The engine is broken	Authorized technical service help is needed
2. The engine is working but there is no vacuum	The rubber of the pump is deformed	Authorized technical service help is needed
	There is vacuum remain in the pump	
3. Vacuum power is too low	Bacteria filter is blocked	The filter needs to be changed
	There is fracture in the jars or hoses	The jars and hoses need to be changed
	The jar lid does not entirely covers the jar top	The jar lid needs to be placed on the jar to in line with user manual
	There are remainsv / fluids in the pump	Authorized technical service help is needed
4. There is unusual sound coming from the device	The rubber of the pump is deformed	Authorized technical service help is needed
	There are remains / fluids in the pump	
5. The engine is working but pilot lamp is not working	The pilot lamp is broken	Authorized technical service help is needed
6. There is leakage current in the device	The device must have been used with a non-grounded plug	The device should be used with a grounded plug
7. There is unusual smell coming from the device	There are remains / fluids in the pump	Authorized technical service help is needed

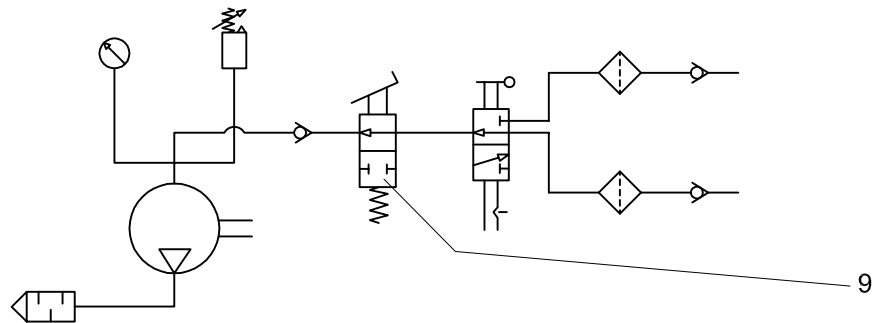
## 4 Suction Devices

### Pneumatic Diagram

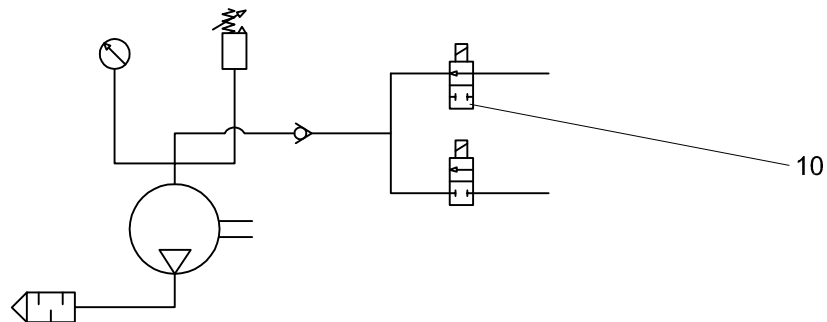
#### 4.1 Pneumatic Diagram



#### 4.2 Extractor Pneumatic Diagram



#### 4.3 Pneumatic Diagram

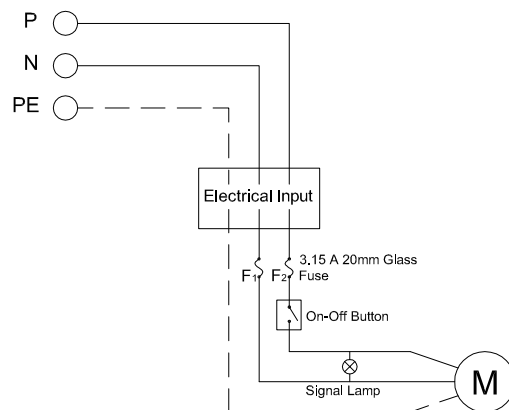


Mounting Number	Part Number	Part Name	Explanation	Quantity
1	N 025	Silencer	All Novela Series	1
2	N 028	Vacuum Pump	All Novela Series	1
3	N 018	Air Adjustment Button	All Novela Series	1
4	N 017	Vacuum Meter	All Novela Series	1
5	N 003	Safety Jar Buoy System	All Novela Series	1
6	N 034	Jar Selection Arm	All Novela Series Except Novela Senseo	1
7		Hydrophobic Filter	All Novela Series Except Novela Senseo	2
8		Collection Jar Buoy System	All Novela Series Except Novela Senseo	2
9	NE 010	Extractor Pedal	Novela Extractor	1
10	NS 024	Selenoid Valve	Novela Senseo	2

# 5 Suction Devices

## Electric Diagram

### 5.1 Extractor Electric Diagram



### 5.2 Electric Diagram

